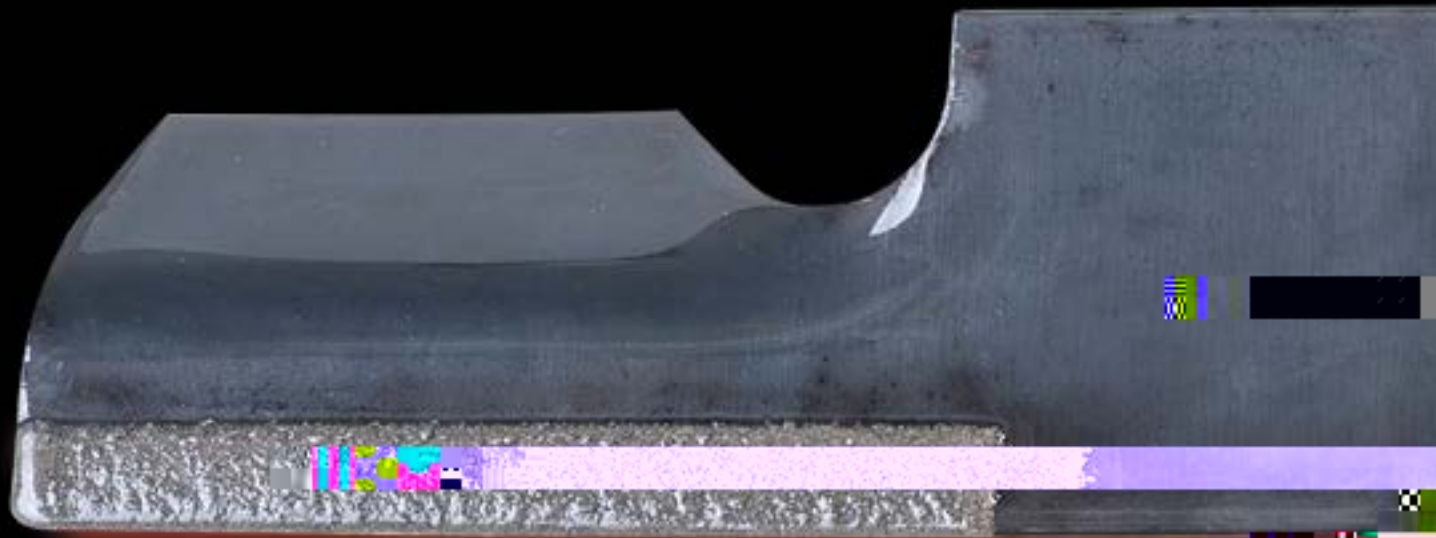




AVAILABLE THROUGH YOUR ORIGINAL EQUIPMENT MANUFACTURER (OEM) DEALER NETWORK



Sharpen your profits, not your blades

No more down time to sharpen blades. No more blade sharpening expenses. No more increase in fuel usage due to dull blades. Only uptime and increased profits. At fisherbarton.com/laseredge you can find the "**Savings Calculator**" to find out just how much LaserEdge can save your operation.

| LaserEdge Part Number | Replaces OE Part Number | Fits | Dimensions (Length X Width X Thickness) | Center Hole Diameter |
|-----------------------|-------------------------|--|---|----------------------|
| 112111-01-LE | SC-112111-01 | Fits 48" SZ Series Decks | 16.25" x 2.50" x .197" | .625" (5/8") |
| 112111-02-LE | SC-112111-02 | Fits 52" SZ Series Decks | 18" x 2.50" x .197" | .625" (5/8") |
| 112111-03-LE | SC-112111-03 | Fits 61" SZ Series Decks | 21.5" x 2.50" x .250" | .625" (5/8") |
| 112111-08-LE | SC-112111-08 | Fits 36" SZ19-36 Deck | 17.5" x 2.50" x .197" | .625" (5/8") |
| 77700-10123 | K5583-34341 | Fits 48" Z-400 and Z-700 Series Mowers | 16.5" x 2.50" x .250" | 1.125" (1-1/8") |
| 77700-10124 | K5613-34341 | Fits 54" Z-400 and Z-700 Series Mowers | 18.5" x 2.50" x .250" | 1.125" (1-1/8") |
| 77700-10125 | K5647-34342 | Fits 60" Z-400 and Z-700 Series Mowers | 20.5" x 2.50" x .250" | 1.125" (1-1/8") |